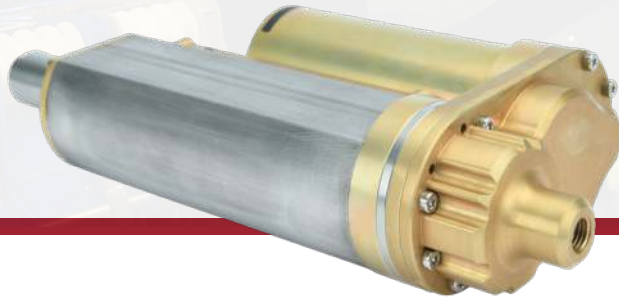


GSE102-0000-00

LINEAR ACTUATOR



This solution is designed specifically for circumstances with volume and interface limitations. Parallel configuration of the motor and output drive with an intention to reduce products total length.

APPLICATIONS



Missiles - Control surface actuation
Rockets - Thrust vectoring

STANDARDS

MIL-STD-461F
MIL-STD-810G

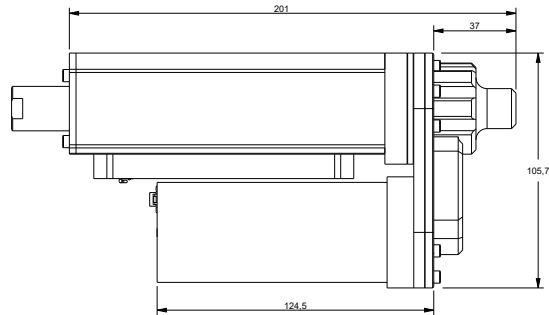
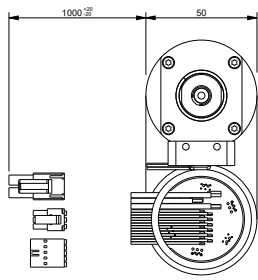
KEY FEATURES

- > Linear Absolute Positioning Sensor
- > Anti-rotation system

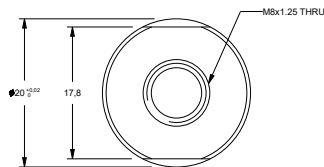
Actuator Specifications

Nominal Voltage	24-48 V
Rated Speed	90 mm/s
Rated Force	5,000 N
Rated Output Power	450 W
Mechanical Stroke	70 mm
Static Load Limit	5,500 N
Operating Temperature	-40°C to +72°C

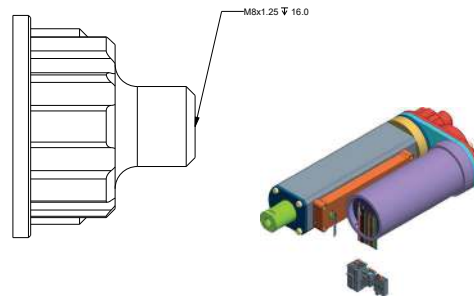
Dimensions	105 x 210 x 50 mm
Weight	2.3 kg
Motor - Gearbox Mount Type	Parallel
Feedback	Hall Sensor + Encoder
Holding Brake	Exist



Output Shaft Connection Interface:



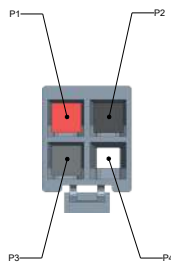
Mechanical Connection Interface - Back:



Potentiometer Cables:

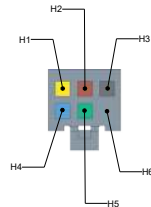


Pin	Signal	Color	AWG
S1	Signal	Grey	24
S2	Supply	Red	24
S3	Ground	Blue	24



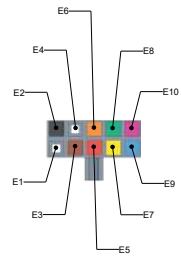
Motor Power Connector:

Pin	Signal	Color	AWG	Connector
P1	Motor Winding 1	Red	14	Motor Power Connector
P2	Motor Winding 2	Black	14	Molex 170000 10 104
P3	Motor Winding 3	Grey	14	Terminal Molex 1720630311
P4	Not Connected	-	-	-



Hall Switch Connector:

Pin	Signal	Color	AWG	Connector
H1	Hall 1	Yellow	24	Hall Switch Connector Molex 430250600
H2	Hall 2	Brown	24	Terminal Molex 430300001
H3	Hall 3	Grey	24	-
H4	Ground	Blue	24	-
H5	+V hall +3.24VDC	Green	24	-
H6	Not Connected	-	-	-



Encoder Connector:

Pin	Signal	Color	AWG	Connector
E1	Not Connected	-	-	Encoder Connector
E2	Vcc 5V±10%	Black	24	Molex 022552102
E3	Ground	Brown	24	-
E4	Not Connected	-	-	-
E5	Channel A-	Red	24	Terminal Molex 16020086
E6	Channel A	Orange	24	-
E7	Channel B-	Yellow	24	-
E8	Channel B	Green	24	-
E9	Index -	Blue	24	-
E10	Index	Purple	24	-