

**GSE103-0000-00**

# LINEAR ACTUATOR



This product includes a 900W output power slotless BLDC motor, planetary gear box, electromechanical power-off brake, and incremental rotary encoder.

## APPLICATIONS



Missiles - Control surface actuation  
Rockets - Thrust vectoring

## STANDARDS

**MIL-STD-461F**  
**MIL-STD-810G**

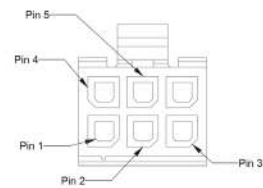
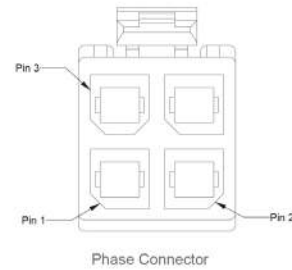
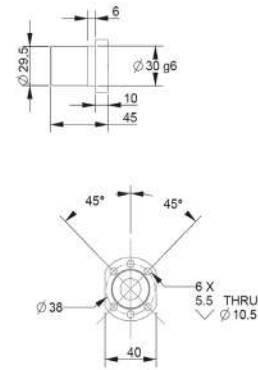
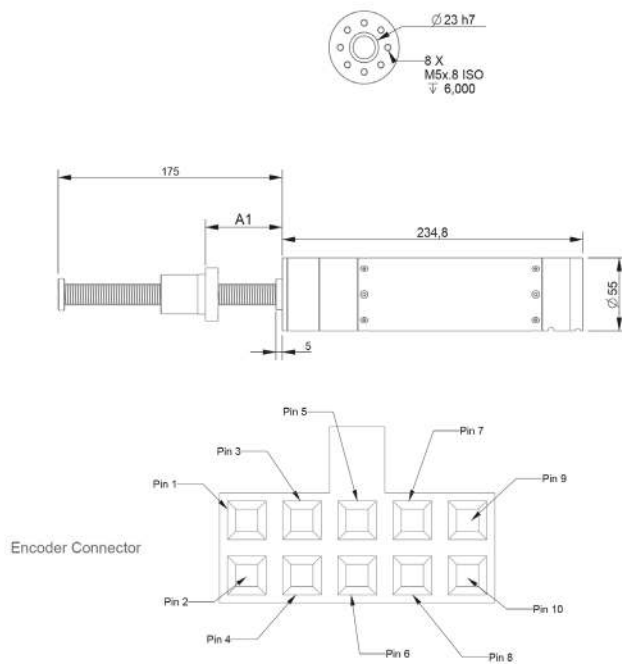
## KEY FEATURES

- > Incremental rotary encoder
- > Power-off brake
- > High power density planetary gearbox
- > High stroke capacity

## Actuator Specifications

Nominal Voltage	48 V
Dimensions	∅ 55 x 235 mm
Rated Speed	75 mm/s
Rated Force	8,000 N
Rated Output Power	720 W
Mechanical Stroke	120 mm
Static Load Limit	15,000 N

Operating Temperature	-40°C to +71°C
Weight	3.375 kg
Motor - Gearbox Mount Type	Inline
Feedback	Hall Sensor + Encoder
Brake Type	Spring Actuated Power Off Type



Pin	Signal	Color	AWG	Connector
1	NC			Encoder Connector Molex 022552102 Terminal Molex 16020086
2	Vcc 5V±10	Black	24	
3	Ground	Brown	24	
4	NC			
5	Channel A -	Red	24	
6	Channel A +	Orange	24	
7	Channel B -	Yellow	24	
8	Channel B +	Green	24	
9	Index -	Blue	24	
10	Index +	Purple	24	
1	Winding 1	Red	14	Phase Connector Molex 17000010104 Terminal Molex 1720630311
2	Winding 2	Black	14	
3	Winding 3	White	14	
4	NC			
1	Hall 1	Yellow	24	Hall Switch Connector Molex 430250600 Terminal Molex 430300001
2	Hall 2	Brown	24	
3	Hall 3	Gray	24	
4	Ground	Blue	24	
5	+V hall +3..24VDC	Green	24	
6	NC			